

MONTREAL





 **PRIDE**
worldcity[®]
A 400 ACRE GLOBAL LIVING

**PUNE'S BIGGEST COSMO-COMMUNITY
INVITES YOU TO CELEBRATE LIFE!**



Pride world city.



A COMBINATION OF COMFORT, SECURITY, CONVENIENCE AND GLOBAL LIFESTYLE

Planned to perfection the Township has many luxury projects including Bungalows, Apartments, Duplexes, Penthouses in a wide range of configurations to suit your style and budget. Upcoming projects include a renowned school, SEZ, malls, a world-class sports academy, and new-age hospitals. It's no wonder that 3500+ families enjoy being a part of the Township



Stay together,
independently.



A LOT MORE SPACE TO
live, laugh and play

Space may be invisible, but it's what every family wants. Space for dreams and ambitions. Space for children to laugh and play. Space to throw happening parties. Simply put, more space for everything.



MONTREAL



2, 3 & 4 Bed Duplex



YOUR DUPLEX. YOUR PRIDE.

Say hello to Montreal. Designed for growing families to enjoy being together. And also relish privacy and independence when required. Two levels of existence. Under a single roof. Welcome to the Montreal Duplex way of life



Representative image

HOMES THAT HELP
YOU STAND TALL WITH YOUR
creativity and design

A double-height living room offers a striking change in perspective. Its lofty windows bathe the space in beautiful sunlight, while its towering walls beckon creative inspiration. Elevate the room's style and character with a magnificent 12-foot-tall painting or an impressive potted palm. Montreal is crafted for those who relish designing their unique, distinctive aesthetic.



Representative image

28 MAGNIFICENT FLOORS OF BUILT-UP SPACE.
BUT ONLY 14 FLOORS OCCUPIED.



WELCOME TO PUNE'S ONLY
exclusive duplex complex.

The Montreal Duplex Complex is truly majestic in all respects. Built on a beautiful landscape, Montreal will stand out in every way. Comprising 9 towers, each soaring to 28 stories (with 14 floors featuring double height), it offers a full array of amenities for every age. Opulent interior fittings and top-of-the-line specifications elevate it to the pinnacle of residential excellence.

Enhancing the quality of life



Club House

Artist's impression



Multipurpose Court

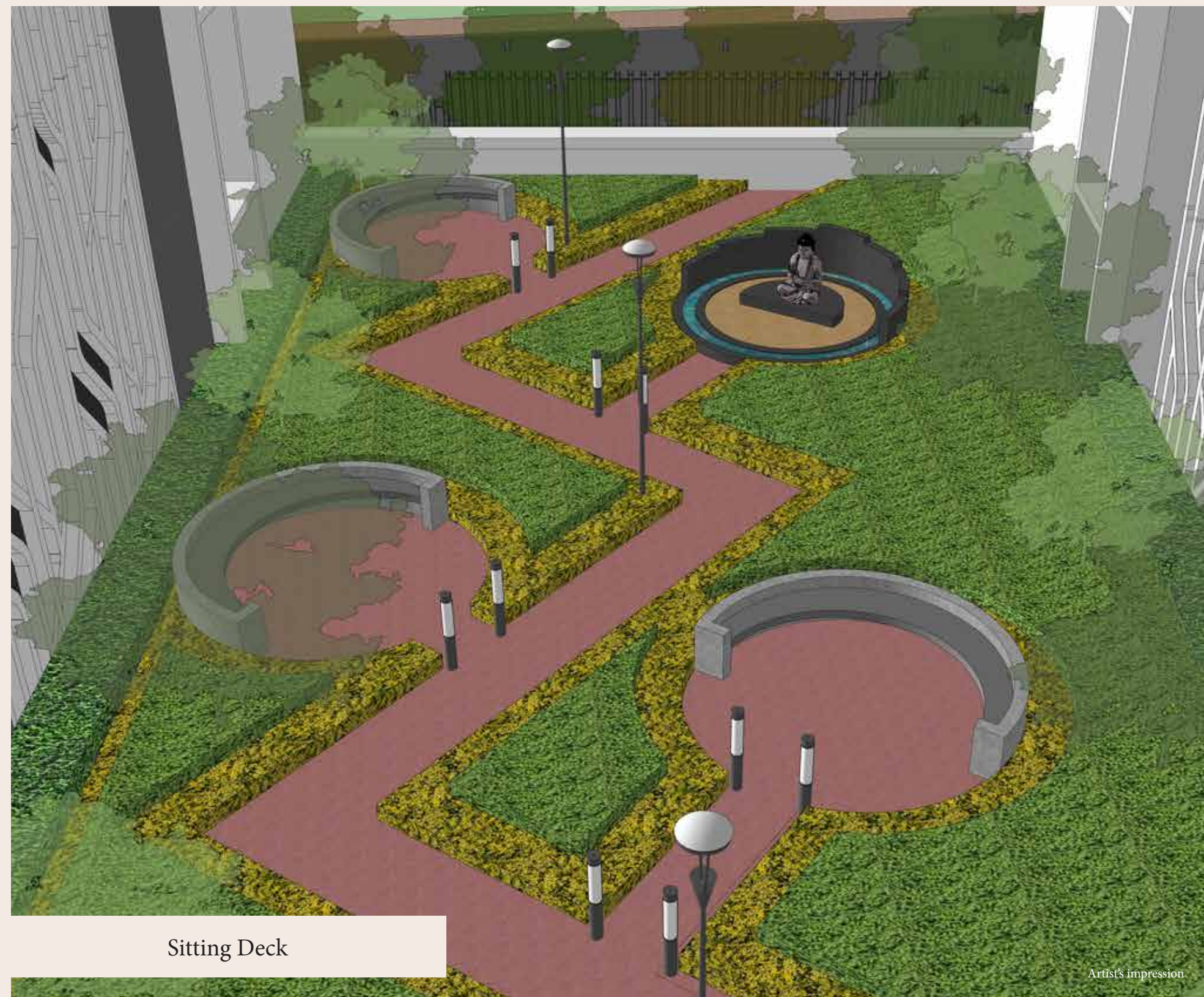
Artist's impression

Embellish every mood with an activity



Cricket Ground

Artist's impression



Sitting Deck

Artist's impression

EVERY MASTERPIECE BEGINS WITH A

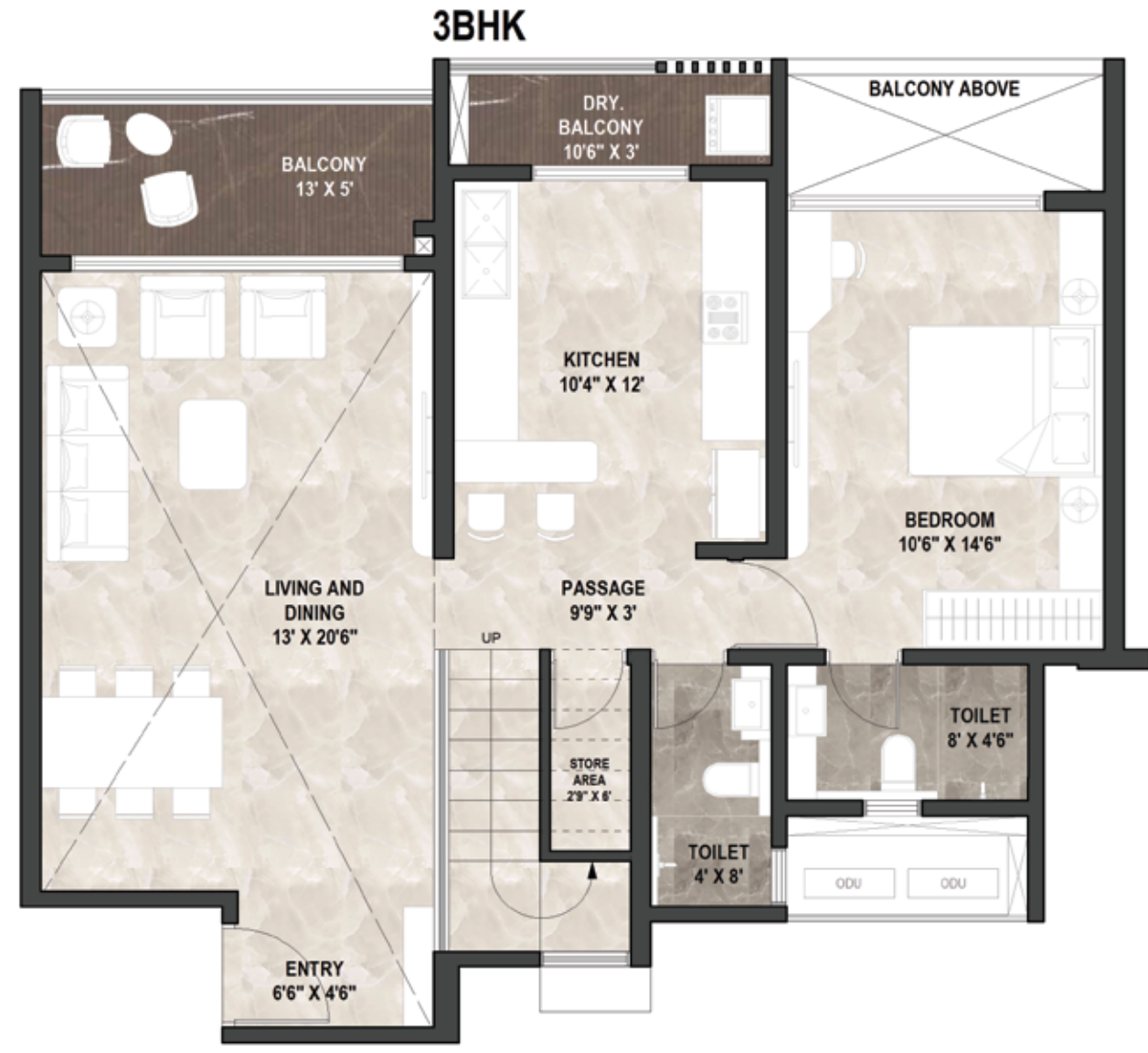
Master Layout



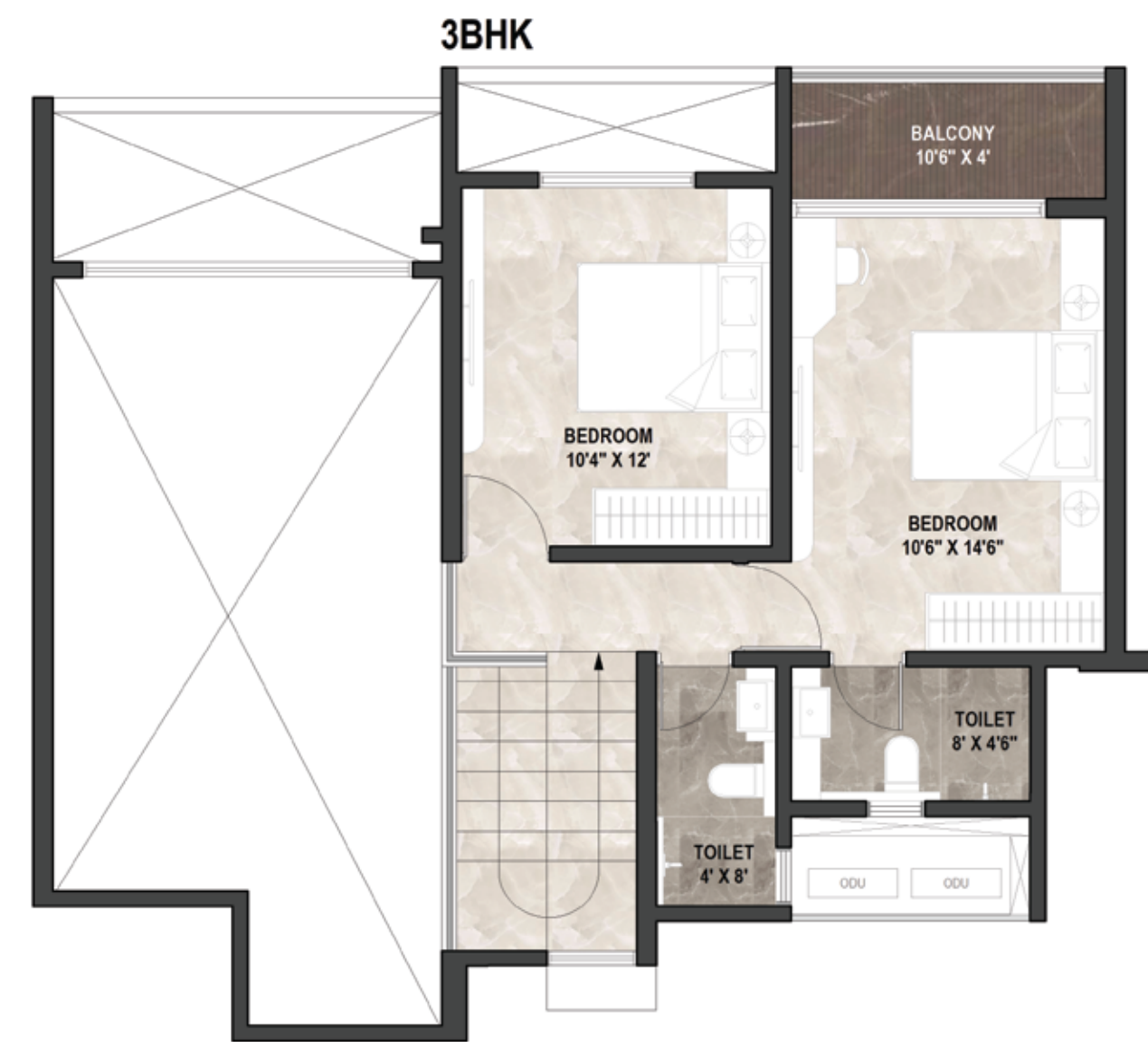
LEGEND

- Club with Lounge
- Multipurpose Hall
- Gym
- Aerobics & Zumba
- Yoga Zone
- Indoor Game Zone
- Mini Cricket Ground
- Kids Play Area - 1
- Toddlers Play Area - 1
- Hopscotch
- Senior Citizen Plaza
- Teenage Plaza
- Open Gym & Calisthenics
- Visitor Parking
- Rock Climbing Zone
- Trampoline
- Palm Court
- Zen Garden
- Chess
- Bonfire Spot
- Chitchat Plaza
- Flag Hoisting
- Parents Sitout
- Ganesh Temple
- Futsal Court
- MUGA
- Pergolas
- Mini Olympic Pool
- Party Lawn
- Kids Pool
- Pool Deck
- Amphitheatre
- Jogging Track
- Gen Z Zone
- Butterfly Garden
- Aroma Garden
- Seating Plaza
- Drop Off Canopy
- Entrance Lobby Lounge
- Entrance Portal
- Arrival Plaza
- Cycle Station
- Reflexology Pathways
- DG Backup for lift
- Driver Toilet in each building
- Sewage Treatment Plant
- OWC

A BUILDING



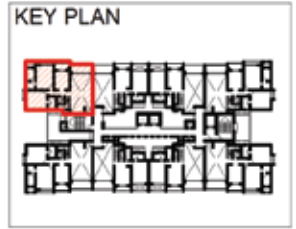
LOWER FLOOR PLAN



UPPER FLOOR PLAN

BUILDING CONFIG.	NO. OF FLOORS	FLAT NO.	FLAT TYPE	RERA CARPET AREA	BALCONY	DRY BALCONY	USABLE RERA CARPET AREA	SALEABLE AREA
				A	B	C	D = (A+B+C)	E = D X 1.35
3BHK (DUPLEX) 4BHK (DUPLEX)	14	02,04, 05,07	3 BHK	1222	102	29	1353	1826
		01,03, 06,08	4 BHK	1783	102	34	1919	2590

A BUILDING

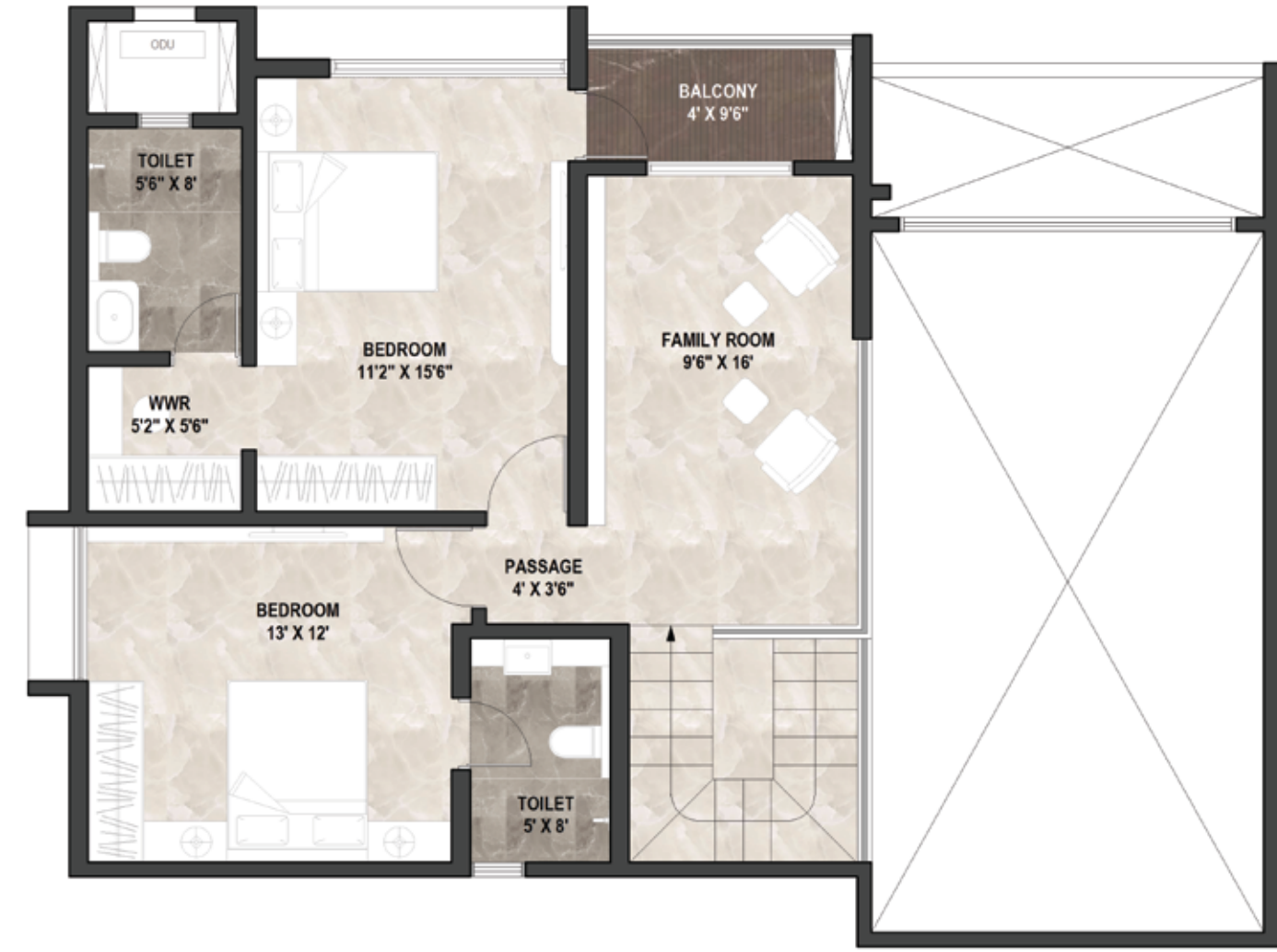


4BHK



LOWER FLOOR PLAN

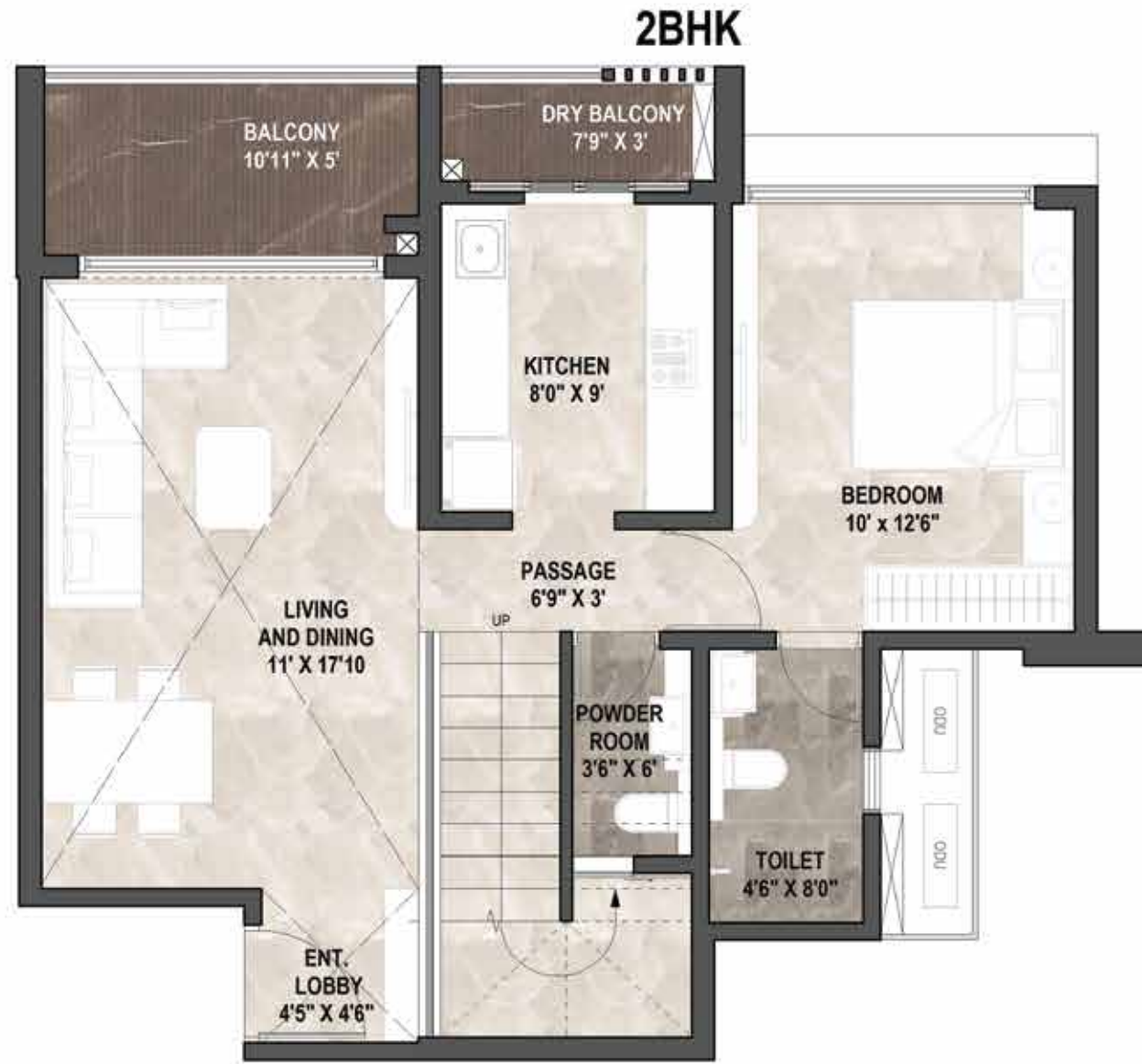
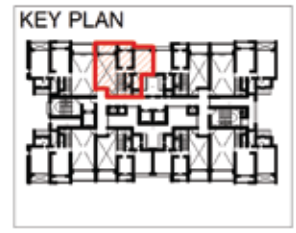
4BHK



UPPER FLOOR PLAN

BUILDING CONFIG.	NO. OF FLOORS	FLAT NO.	FLAT TYPE	RERA CARPET AREA	BALCONY	DRY BALCONY	USABLE RERA CARPET AREA	SALEABLE AREA
				A	B	C	$D = (A+B+C)$	$E = D \times 1.35$
3BHK (DUPLEX) 4BHK (DUPLEX)	14	02,04, 05,07	3 BHK	1222	102	29	1353	1826
		01,03, 06,08	4 BHK	1783	102	34	1919	2590

C BUILDING



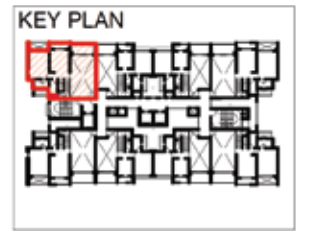
LOWER FLOOR PLAN



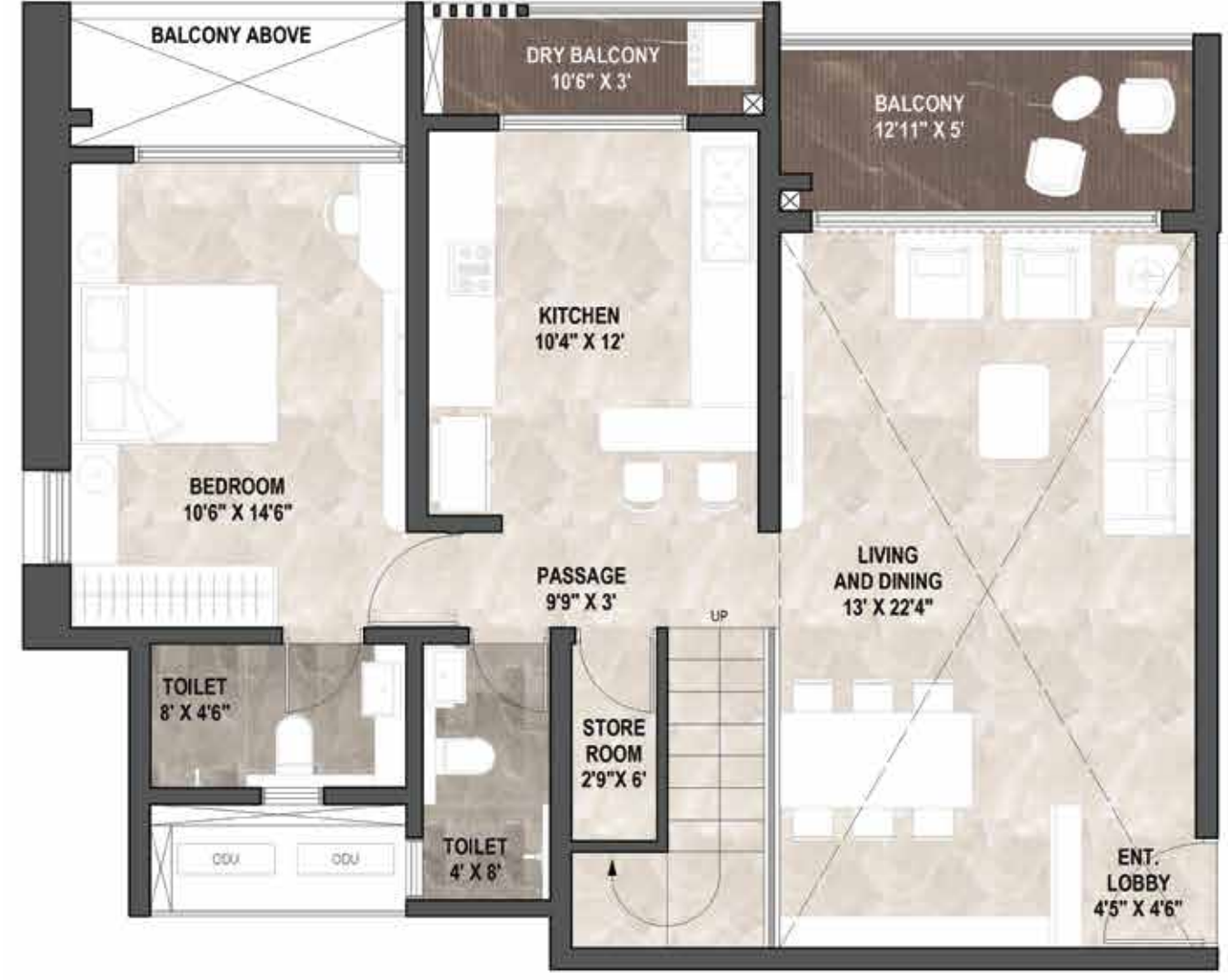
UPPER FLOOR PLAN

BUILDING CONFIG.	NO. OF FLOORS	FLAT NO.	FLAT TYPE	RERA CARPET AREA	BALCONY	DRY BALCONY	USABLE RERA CARPET AREA	SALEABLE AREA
				A	B	C	D = (A+B+C)	E = D X 1.35
2BHK (DUPLEX) 3BHK (DUPLEX)	14	01,04, 05,08	2 BHK	917	73	20	1010	1363
		02,03, 06,07	3 BHK	1221	103	28	1352	1825

C BUILDING

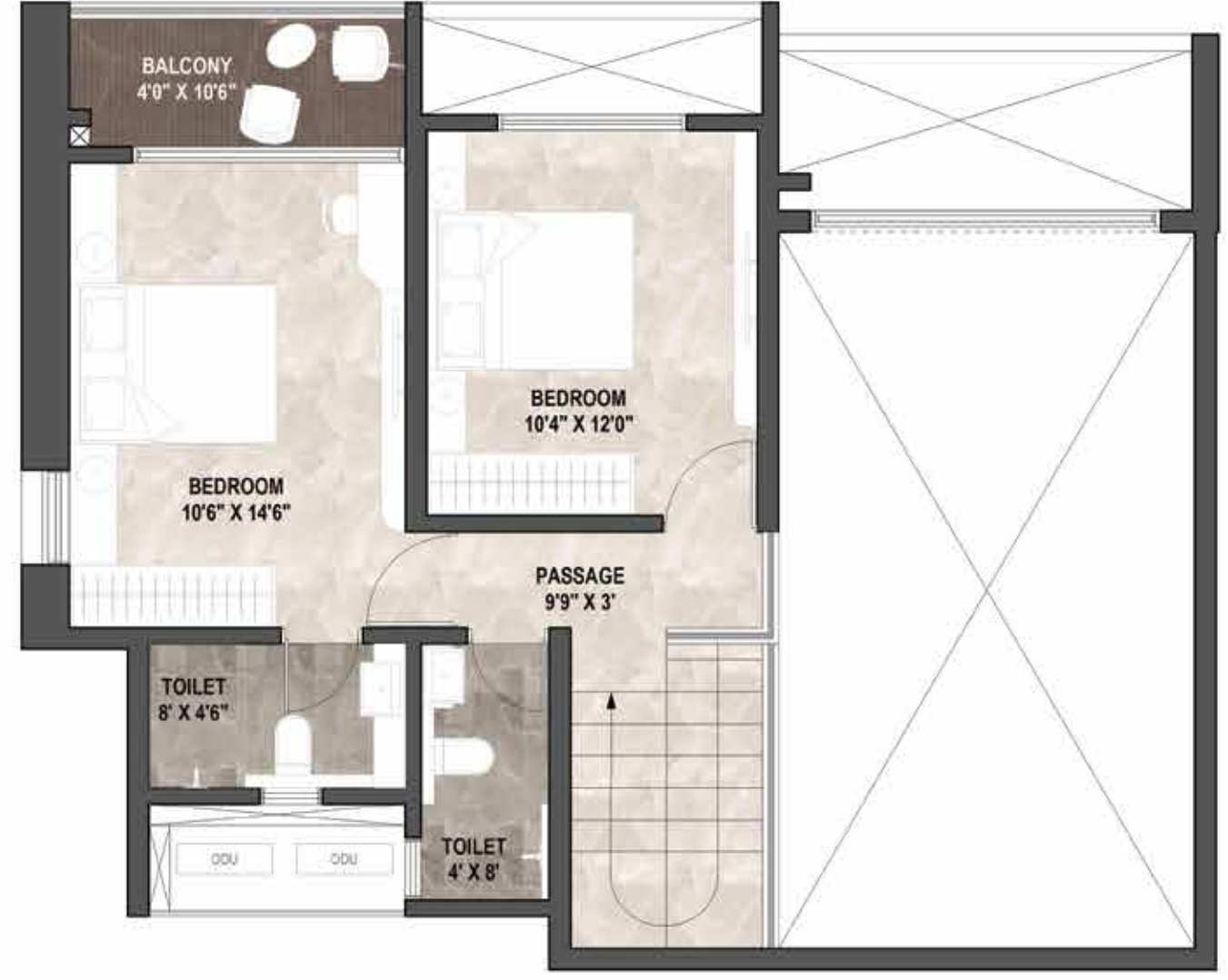


3BHK



LOWER FLOOR PLAN

3BHK



UPPER FLOOR PLAN

BUILDING CONFIG.	NO. OF FLOORS	FLAT NO.	FLAT TYPE	RERA CARPET AREA	BALCONY	DRY BALCONY	USABLE RERA CARPET AREA	SALEABLE AREA
				A	B	C	D = (A+B+C)	E = D X 1.35
2BHK (DUPLICATE)	14	01,04,05,08	2 BHK	917	73	20	1010	1363
3BHK (DUPLICATE)		02,03,06,07	3 BHK	1221	103	28	1352	1825

SPECIFICATIONS

- RCC Structure in Alu-form
- Partial walls in AAC Block work
- Walls will be finished in Gypsum
- 800mmx1600mm Vitrified Tile flooring in all rooms & laminated wooden flooring in master bedroom
- Matt finish tile flooring in Bathroom, Terrace & Dry Balcony
- Ceramic tile dado upto 7 ft. in each Bathroom
- Fall ceiling in all toilets
- Designer Tiles flooring in each floor Lobby
- Branded C.P. Fittings in all Bathrooms
- Branded Sanitary Wares in all Bathrooms
- Veneer finished & Melamine Polished Main doors & Bedroom Doors for all Flats
- Both Side Laminated Doors for all Toilets
- Branded Fittings for all Doors
- Aluminium Windows: Powder coated Aluminium windows with Aluminium / PVC Mosquito net in each Flats (Mosquito Nets Will not be provided for toilet Windows)
- Toilet Windows: Aluminium Louvered windows with provision for Exhaust fan
- M.S. Railing from inside of flat for Aluminium Windows (Excluding toilet) Upto 1m Height from Floor Finish level
- S.S and Glass railing for balconies
- Concealed Copper wiring with Circuit breakers
- Branded Electrical switches in all flats
- Provision of electrical point for invertor
- TV & Telephone points in Hall & Master Bed Room
- Provision of electrical point for AC in all Bed Rooms & Living Room
- Kitchen platform with S.S. Sink with provision for Water purifier inlet
- Semi modular kitchen Cabinet with HOB & Chimney
- Pipe gas System of MNGL for each Flat
- Plastic Emulsion Paint for internal walls and Ceiling
- Oil Paint to Railings
- Texture with acrylic paint to exterior walls
- Automatic Lifts
- Fire-fighting system inside the flats
- Smoke Detection Alarm System inside the Flats & Lobbies
- Fire Resistance door for fire Staircase
- Solar Hot water in Master Toilet (75 Lit/Day/Flat)
- Digital Lock for main door
- Video Door phone



Bhakti Shakti Chowk

Markal Industrial Area

To Express Highway

Spine Road

Bhosari



Nashik Phata

Bhosari MIDC

Porwal Road

Proposed Ring Road

Wakad

Lohegaon

Towards Hinjawadi

CHARHOLI CENTRE POINT OF PMC & PCMC

Old Mumbai - Pune Express Highway

Alandi Road

Pune International Airport

Nagar Road

Wagholi

Commerzone

Golf Course

Viman Nagar

Phoenix Mall

EON IT Park

Khadki

Bussiness Bay

Kharadi

Yerawada

KEY LOCATIONS OF PMC & PCMC

VIMAN NAGAR - TIME : 23 MINS

KALYANI NAGAR- TIME : 30 MINS

KOREGAON PARK - TIME : 35 MINS

EON IT PARK - TIME : 37 MINS

BHOSARI MIDC - TIME : 43 MINS

KHARADI - TIME : 35 MINS

WAGHOLI - TIME : 37 MINS

ALANDI - TIME : 23 MINS

MOSHI - TIME : 32 MINS

YERWADA - TIME : 27 MINS

Shivaji Nagar

Bund Garden

Kalyani Nagar

Magarpatta

Koregoan Park



Scan for Google Maps



Representative image

IT TAKES A COMMUNITY TO BRING UP A CHILD.

Celebrating family life in all its glory.

Pride World City is a meticulously designed gated township, that provides a high level of security and peace of mind to the Cosmo- communities who have chosen it as their cherished abode. It is also a reassuring haven where family members can move freely and enjoy ample space and varied activities.



PRIDE WORLD CITY IS AN AMAZING LIVING AND LIFESTYLE EXPERIENCE.

Blessed with World-class amenities, facilities, and conveniences, it's tucked away in a quiet spot that offers a pollution-free environment that is a rare commodity in the city. In other words, you get to enjoy the best of both worlds- Live in a bustling city WITHOUT the NOISE and POLLUTION. With the development of the Ring Road, the value of the apartment is sure to surge and fetch handsome returns for generations to come.



INSPIRATION IS THE FOUNDATION OF
PRIDE WORLD CITY



SPEARHEADING INDIAN REAL ESTATE AS A FUTURE FORWARD DEVELOPER

A renowned name in the real estate space of Pune, Bangalore, and Mumbai, the Pride Group has been a leader in developing state-of-the-art commercial and residential projects since its inception in 1995. The Group is known for its bold contemporary designs, minute attention to detail, excellent engineering and uncompromising attitude when it comes to ethics.

The company has earned a distinctive place in the consumer's mind, as both an innovative and a reliable real estate development brand. Over the years, it has radically transformed the skylines of Pune, Bangalore & Mumbai. With its visionary designs, solid work culture and commitment to quality the company has delivered over 60 million sq. ft. of residential space and 2 million sq. ft. of commercial space. With over 50 million sq. ft. of residential space and 10 million sq. ft. of commercial space under construction, the group is poised for rapid expansion. The group has also forayed into the luxury hospitality segment with its extensive chain of "Pride Group of Hotels", setting new benchmarks in the hospitality segment.

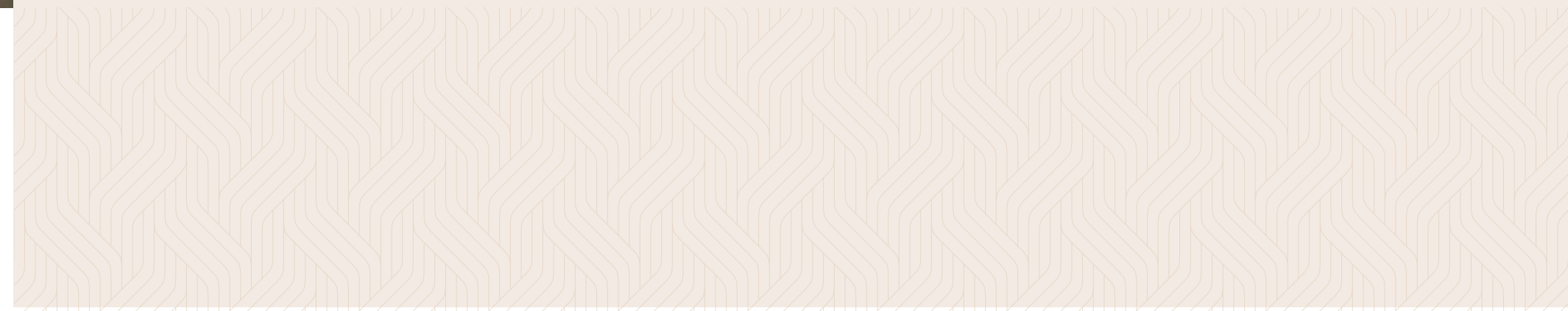


BORN FROM A GREAT VISION, FOR A GREATER CAUSE.

We at Pride have a responsibility to ensure quality living in quality space, and that is what we strive to create. Everything we do is a step in this direction – consistently working to surpass expectations, having a progressive work culture, nurturing a healthy work ethic, and pursuing a relentless drive to overcome every challenge. With an empowering vision of being among the top five real estate brands in the country and driven by our mission to raise the bar in living standards, we march ahead purposefully, confident in the strength of our convictions and beliefs.

A handwritten signature in black ink, appearing to read 'Arvind Jain'.

Mr Arvind Jain
MD Pride Group



COMPLETED PROJECTS

BROOKLYN



Long Island



Notting Hill



KINGSBURY



TOWN PLAZA



MANHATTAN



ONGOING PROJECTS

BOSTON 1 & 2 BHKs



SOHO 2 & 2.5 BHKs



wellington 2, 3 & 4 BHKs



ATLANTIC 3 & 4 BHKs INSPIRED BY WORLD TRAVELS





MONTREAL



SITE OFFICE

Adjacent to D.Y. Patil Knowledge City, Charholi BK Dhanori Lohegaon road Pune- 412105 | 020 2652 7000, +91 80555 47000 | www.prideworldcity.com



MahaRERA No. P52100053279
<https://maharera.mahaonline.gov.in/>

CORPORATE OFFICE

5th Floor, Pride House 108, Ganeshkhind Road, Near Pune University, Pune 411016
020 6709 1000 | www.pridegroup.net

DEVELOPED BY



DISCLAIMER: This is not a legal document. The plans and photographs are conceptual and subject to change. The actual product shall vary according to the sole discretion of the developer. No claims shall be entertained by the developer depending on this material. Though the contents of the brochure have been compiled with the intention to provide information to the best of our knowledge, there may be some changes from time to time which may not reflect on the brochure. While enough care is taken by the developer to ensure that the information on the brochure is up to date and accurate, the users are advised to verify designs, plans, specifications, facilities, features, etc. with our team.